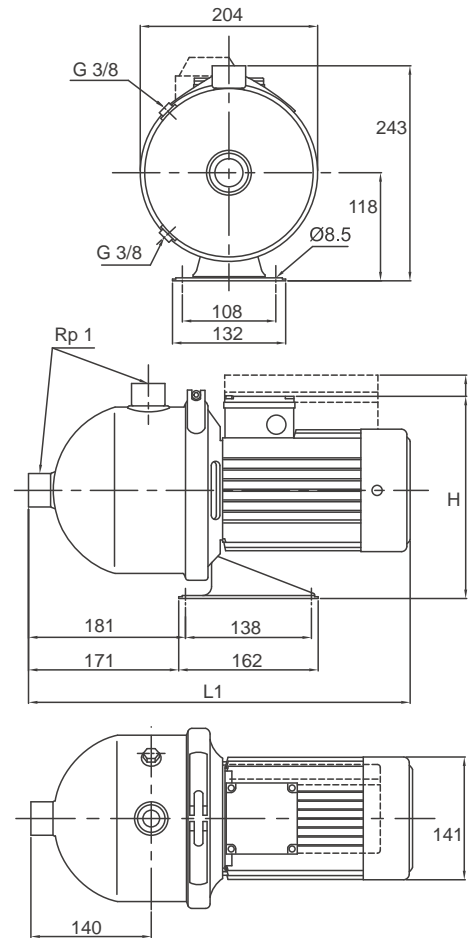
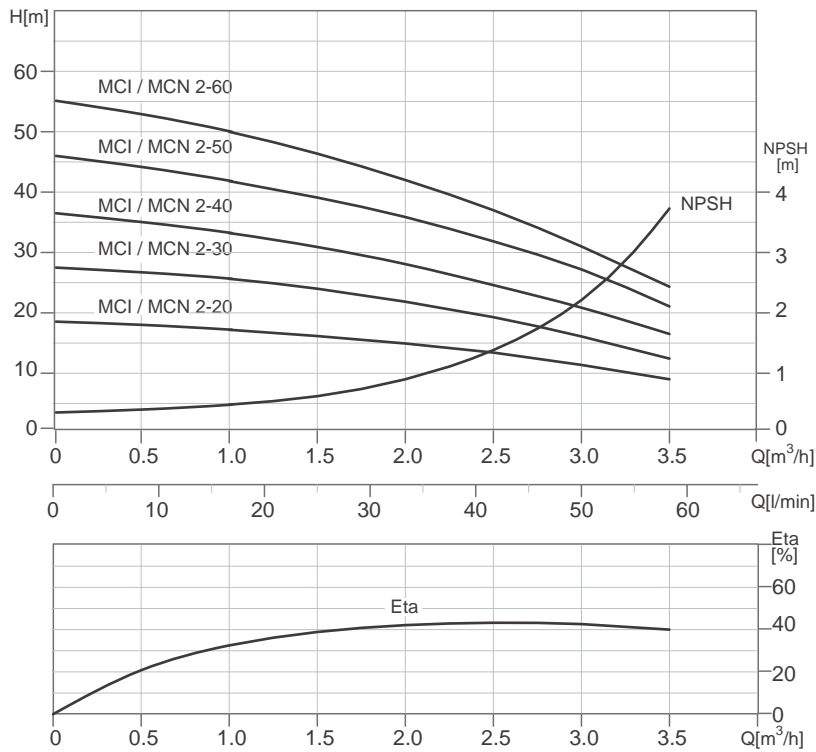


# MCI / MCN 2

## Performance Curves



## Dimensions and Weights

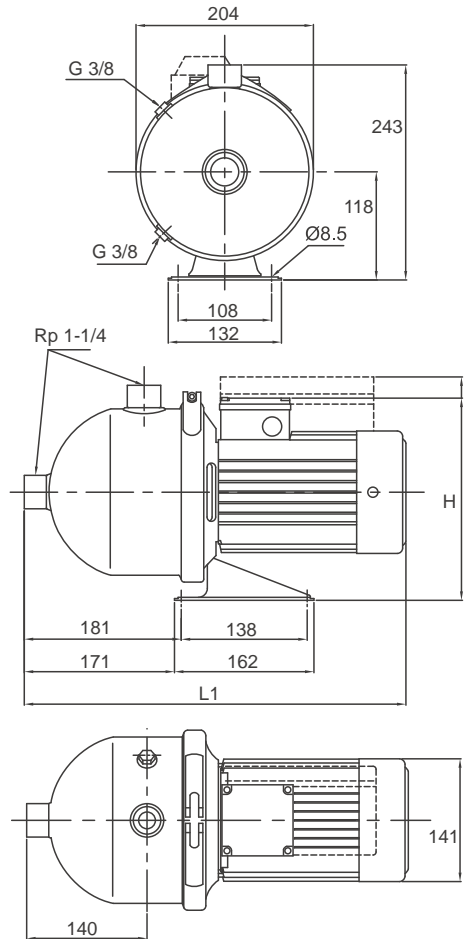
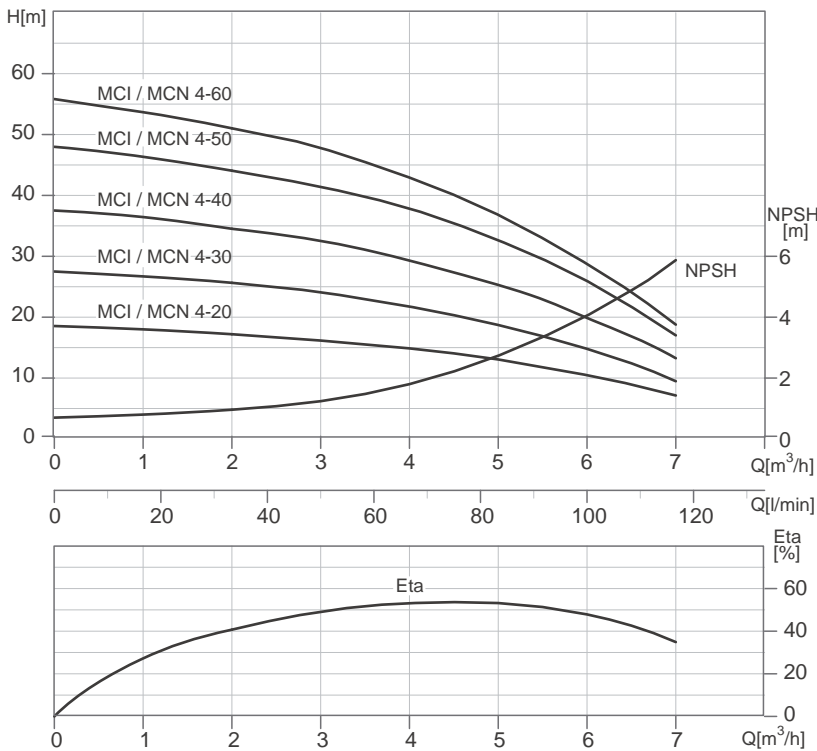
Model	Motor		Dimensions(mm)				Net weight [kg]
	P <sub>2</sub>		1-Phase		3-Phase		
	Phase	HP	L1	H	L1	H	
MCI / MCN 2-20	1 3	0.5	403	255	403	233	9.6
MCI / MCN 2-30	1 3	0.5	403	255	403	233	9.9
MCI / MCN 2-40	1 3	0.5	403	255	403	233	10.1
MCI / MCN 2-50	1 3	0.75	403	255	403	233	10.8
MCI / MCN 2-60	1 3	0.75	403	255	403	233	11.0

## Electrical Data

Model	1 x 220-240 V		3 x 220-240 / 380-415 V	
	P <sub>1</sub> [W]	I <sub>1/n</sub> [A]	P <sub>1</sub> [W]	I <sub>1/n</sub> [A]
MCI / MCN 2-20	360	1.7-1.9	370	2.0-2.7 / 1.2-1.6
MCI / MCN 2-30	470	2.3-2.2	550	2.4-2.8 / 1.4-1.6
MCI / MCN2-40	580	2.7-2.6	650	2.4-2.7 / 1.4-1.6
MCI / MCN 2-50	720	3.2-3.3	810	2.7-3.0 / 1.6-1.8
MCI / MCN 2-60	830	3.8-3.6	910	2.9-3.3 / 1.7-1.9

# MCI / MCN 4

## Performance Curves



## Dimensions and Weights

Model	Motor		Dimensions(mm)				Net weight [kg]
	P <sub>2</sub>		1-Phase		3-Phase		
	Phase	HP	L1	H	L1	H	
MCI / MCN 4-20	1/3	0.5	403	255	403	233	9.6
MCI / MCN 4-30	1/3	0.5	403	255	403	233	9.9
MCI / MCN 4-40	1/3	0.75	403	255	403	233	10.6
MCI / MCN 4-50	1/3	1	441	255	441	233	12.1
MCI / MCN 4-60	1/3	1.5	441	255	441	233	12.3

## Electrical Data

Model	1 x 220-240 V		3 x 220-240 / 380-415 V	
	P <sub>1</sub> [W]	I <sub>1/1</sub> [A]	P <sub>1</sub> [W]	I <sub>1/1</sub> [A]
MCI / MCN 4-20	580	2.7-2.6	660	2.5-2.9 / 1.5-1.7
MCI / MCN 4-30	820	3.9-3.7	850	2.8-3.0 / 1.6-1.7
MCI / MCN 4-40	1000	4.6-4.4	1060	3.3-3.5 / 1.9-2.0
MCI / MCN 4-50	1240	5.8-5.5	1310	4.2-4.5 / 2.4-2.6
MCI / MCN 4-60	1510	7.1-6.9	1550	5.2-5.6 / 3.0-3.3